

GENERAL NOTES:

1. ALL FASTENERS SHALL BE IN ACCORDANCE WITH THESE DRAWINGS. SPECIFIED ANCHOR EMBED TO BASE MATERIAL SHALL BE BEYOND WALL FINISH OR STUCCO.
2. OPENINGS, BUCKING & BUCKING FASTENERS MUST BE PROPERLY DESIGNED & INSTALLED TO TRANSFER WIND LOADS TO THE STRUCTURE.
3. THESE NON-IMPACT RATED PRODUCT INSTALLATIONS ARE IN ACCORDANCE WITH AND MEET THE REQUIREMENTS OF THE FLORIDA BUILDING CODE (FBC).
4. ALL ANCHORS SECURING PRODUCT FRAMES TO PRESSURE TREATED BUCKS OR WOOD FRAMING SHALL BE CAPABLE OF RESISTING CORROSION CAUSED BY THE PRESSURE TREATING CHEMICALS IN THE WOOD.
5. MATERIALS, INCLUDING BUT NOT LIMITED TO STEEL SCREWS, THAT COME INTO CONTACT WITH OTHER DISSIMILAR MATERIALS SHALL MEET THE REQUIREMENTS OF FLORIDA BUILDING CODE CHAPTER 20.
6. TO THE BEST OF OUR KNOWLEDGE, THE PRODUCT SHOWN HEREIN IS CERTIFIED & QUALITY ASSURED BY A FLORIDA STATE APPROVED CERTIFICATION/QQA ENTITY & SHALL BE LABELED IN ACCORDANCE WITH THE FBC AND THE FLORIDA DEPARTMENT OF BUSINESS & PROFESSIONAL REGULATION SPECIFICATIONS. PRODUCT ASSEMBLY IS NOT PART OF THIS DRAWING AND SHALL BE IN ACCORDANCE WITH THE MANUFACTURER'S QUALITY ASSURANCE SPECIFICATIONS & TESTING REPORTS.
7. CERTIFICATION OF THESE PRODUCT INSTALLATIONS SHALL BE CONSIDERED VOID IF ANY OF THE FOLLOWING APPLY: 1) PRODUCT IS INSTALLED WITHOUT A BUILDING PERMIT FROM THE APPLICABLE LOCAL BUILDING DEPARTMENT. 2) PRODUCT IS INSTALLED BY ANYONE OTHER THAN A LICENSED CONTRACTOR EXPERIENCED WITH INSTALLATIONS OF THIS TYPE OF PRODUCT. 3) IF CHANGES HAVE OCCURRED TO THE PRODUCT'S CERTIFICATION ENTRY'S CERTIFICATE THAT CAUSE THESE INSTALLATIONS TO BE INCORRECT OR INCONSISTENT WITH WHAT HAS BEEN TESTED.
8. THE LEAST DESIGN PRESSURE SPECIFIED EITHER IN THIS DRAWING OR IN THE PRODUCTS CERTIFICATION SHALL CONTROL FOR THE INSTALLED PRODUCT.
9. THESE DRAWINGS CERTIFY THE PRODUCT INSTALLATION ONLY. WATER PROOFING OF THE INSTALLED PRODUCT IS NOT PART OF THIS INSTALLATION CERTIFICATION. THAT RESPONSIBILITY SHALL BE THAT OF THE MANUFACTURER &/OR INSTALLER.

INSTALLATION EVALUATION IS BASED ON APPLICABLE ANCHOR STANDARDS AND/OR INFORMATION & RESULTS FROM APPLICABLE TEST REPORTS. THE FLORIDA BUILDING CODE VERSION CONSIDERED WITH THE EVALUATION WAS THAT IN FORCE AT THE TIME OF THE EVALUATION. IN THE EVENT OF CODE VERSION CHANGES/UPDATES OR IN THE EVENT THAT NEW OR ADDITIONAL TESTING IS COMPLETED ON THE REFERENCED PRODUCT, PRIOR TO STATING CODE COMPLIANCE WITH THE STATE, THE MANUFACTURER SHALL CONFIRM WITH THE INSTALLATION EVALUATION ENGINEER OF RECORD THAT THE INSTALLATIONS SPECIFIED HEREIN ARE CURRENT WITH THE THEN CURRENT TESTING, CODE AND APPLICABLE STANDARDS.

FRAME ANCHOR REQUIREMENTS TABLE

OPENING TYPE (SUBSTRATE)	FRAME/CLIP/NAIL FIN TO OPENING FASTENER TYPE	MINIMUM EMBED	MINIMUM EDGE DIST.
(1) FRAME SCREWS			
MIN. 2X4 WOOD FRAME OR BUCK (MIN. GR. 3 & G=0.55)	NO. 10 SMS OR WOOD SCREW	1 1/4"	3/4"
MIN. 18 GA. .33 KSI METAL STUD	NO. 10 GR. 5 SELF TAP/DRILL SCREW	FULL	1/2"
MIN. 1/8" THK A36 STEEL	NO. 10 GR. 5 SELF TAP/DRILL SCREW	FULL	1/2"
MIN. 1/8" THK 6063-T5 ALUM.	NO. 10 GR. 5 SELF TAP/DRILL SCREW	FULL	1/2"
MIN. C-90 CMU OR 2500 PSI CONCRETE	(2) 1/4" CONCRETE SCREW	1 1/4"	2"

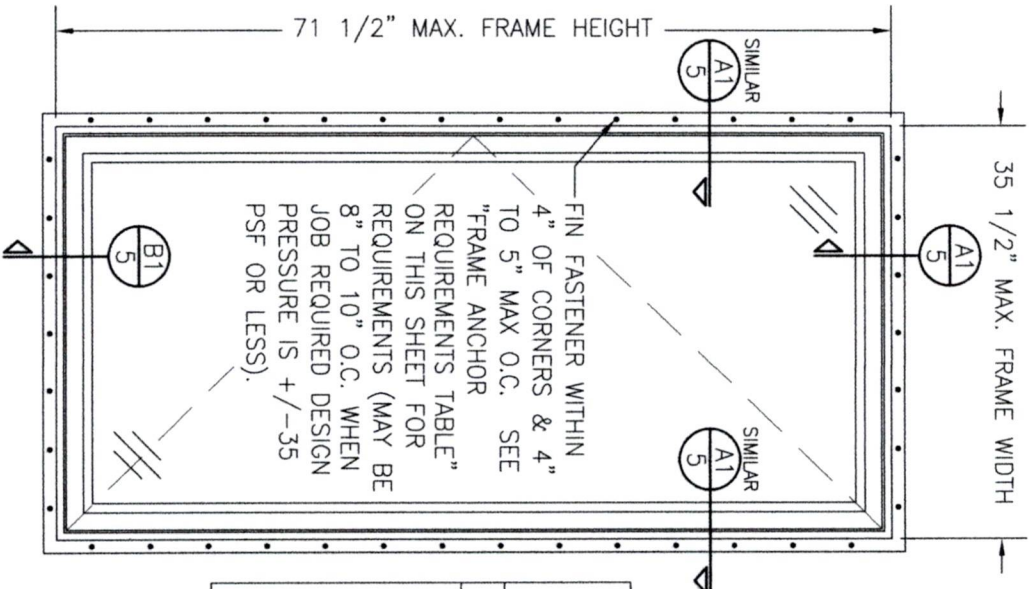
(1) INSTALLATION CLIP SCREWS

MIN. 2X4 WOOD FRAME OR BUCK (MIN. GR. 3 & G=0.55)	NO. 10 SMS SCREW	1 1/4"	1/2"
MIN. 18 GA. 33 KSI METAL STUD	NO. 10 GR. 5 SELF TAP/DRILL SCREW	FULL	1/2"
MIN. 1/8" THK A36 STEEL	NO. 10 GR. 5 SELF TAP/DRILL SCREW	FULL	1/2"
MIN. 1/8" THK 6063-T5 ALUM.	NO. 10 GR. 5 SELF TAP/DRILL SCREW	FULL	1/2"

(3) NAILING FIN FASTENERS

MIN. 2X4 WOOD FRAME OR BUCK (MIN. GR. 3 & G=0.55)	NO. 8 SMS SCREW	1 3/8"	1/2"
MIN. 2X4 WOOD FRAME OR BUCK (MIN. GR. 3 & G=0.55)	1 1 GA. ROOFING NAIL	1 3/8"	1/2"
MIN. 1/8" THK A36 STEEL	NO. 8 GR. 5 SELF TAP/DRILL SCREW	FULL	1/2"
MIN. 1/8" THK 6063-T5 ALUM.	NO. 8 GR. 5 SELF TAP/DRILL SCREW	FULL	1/2"

- (1) FRAME AND INSTALLATION CLIP SCREWS SHALL BE A PAN OR HEX HEAD SCREW.
- (2) CONCRETE SCREWS SHALL BE ELCO ULTRACONS (C.S.), ELCO CRETE-FLEX (S.S.), ITW RAMSET/RED HEAD TAPCONS (C.S. OR S.S.) OR HILTI KWIK-CON II (C.S OR S.S.).
- (3) WHEN SCREWS ARE USED WITH THE NAIL FIN, THEY MUST BE A WAFLE HEAD SCREW OR HAVE A FLAT WASHER AT THE SCREW HEAD.



EXTERIOR ELEVATION:

SCALE: 3/4" = 1'-0"

(NAIL FIN MOUNT CONDITION)

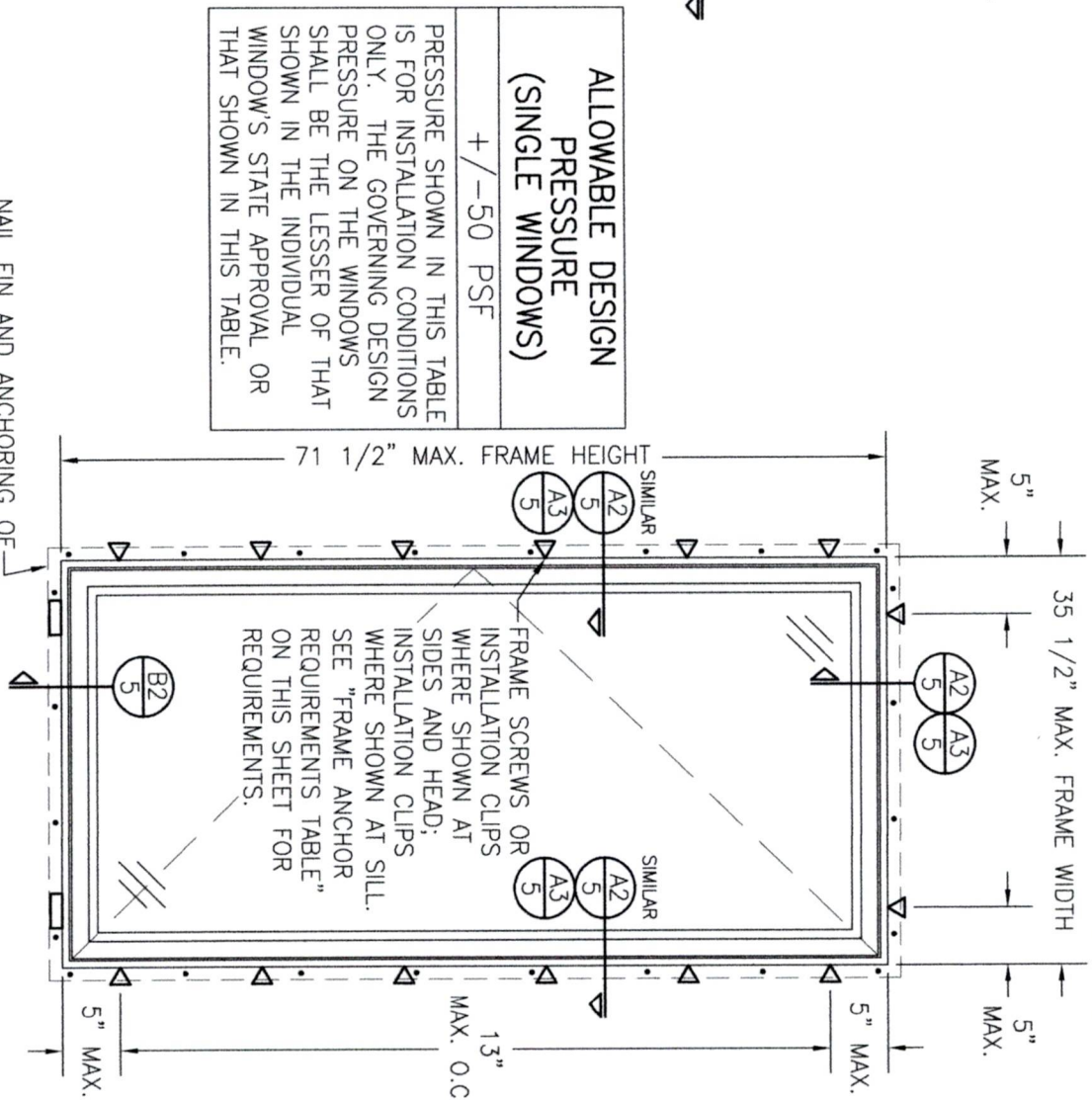
CONDITIONS SHOWN ON THIS DRAWING ARE GOVERNED BY INSTALLATION REQUIREMENTS ONLY. THE GOVERNING CONDITIONS ON ANY SPECIFIC WINDOW SHALL BE THE LESSER OF THOSE SPECIFIED IN THE WINDOWS STATE APPROVAL OR THAT SHOWN IN THESE DRAWINGS.

ALTERNATE ANCHOR/SUBSTRATE EVALUATION NOTE:

ALL ALTERNATE ANCHORS IN THEIR SPECIFIED SUBSTRATES HAVE BEEN ANALYZED IN ACCORDANCE WITH THEIR APPLICABLE STANDARD(S) AND ARE FOUND TO BE EQUIVALENT TO OR STRONGER THAN THE ANCHOR(S) USED IN TESTING WITH THIS PRODUCT.

INSTALLATION NOTE:

WHEN NECESSARY, INSTALLATION METHODS MAY BE MIXED WITH ANY ONE WINDOW SUCH THAT INDIVIDUAL SIDES OF THE WINDOW MAY USE ONE OR THE OTHER ANCHOR METHOD (EXAMPLE: ONE SIDE MAY USE FRAME SCREW METHOD WHILE OTHER SIDES USE FIN)



EXTERIOR ELEVATION:

SCALE: 3/4" = 1'-0"

NAIL FIN AND ANCHORING OF J
NAIL FIN IS OPTIONAL &
SHALL NOT ACT AS A
SUBSTITUTE FOR THE FRAME
ANCHORS SPECIFIED. FIN MAY
BE REMOVED WHEN REQUIRED
BY OPENING CONDITIONS

EXTERIOR ELEVATION:
SINGLE WINDOW
SCALE: 3/4" = 1'-0"
(FRAME SCREW & CLIP
MOUNT CONDITION)

[illegible]

MANUFACTURER



CUSTOM WINDOW SYSTEMS, INC.
1900 SW 44TH AVENUE
OCALA, FL 34474
352-368-6922

DRAWING TITLE

COMFORT SHIELD VINYL NON-IMPACT CASEMENT WINDOWS

CONSULTANTS

**W. W. SCHAEFER ENGINEERING
& CONSULTING, P.A.**
26376 NADIR ROAD; UNIT 309
PUNTA GORDA, FL 33983
PHONE: 561-744-3424

CERTIFICATION

WARREN W. SCHAEFER, P.E.
P.E. NO. 44135

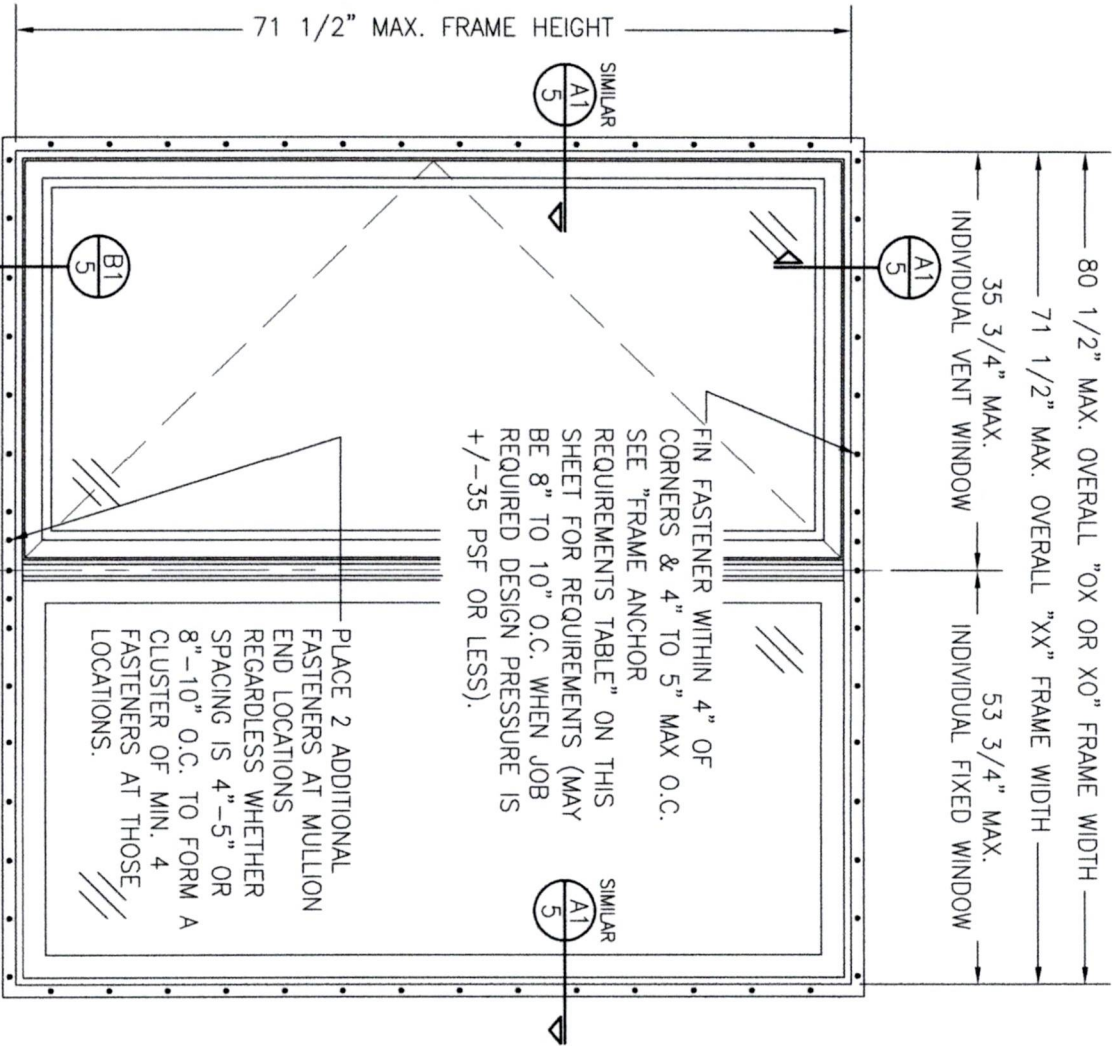
DRAWING NO.

2020

REV.

SHEET NO.

1 OF 6

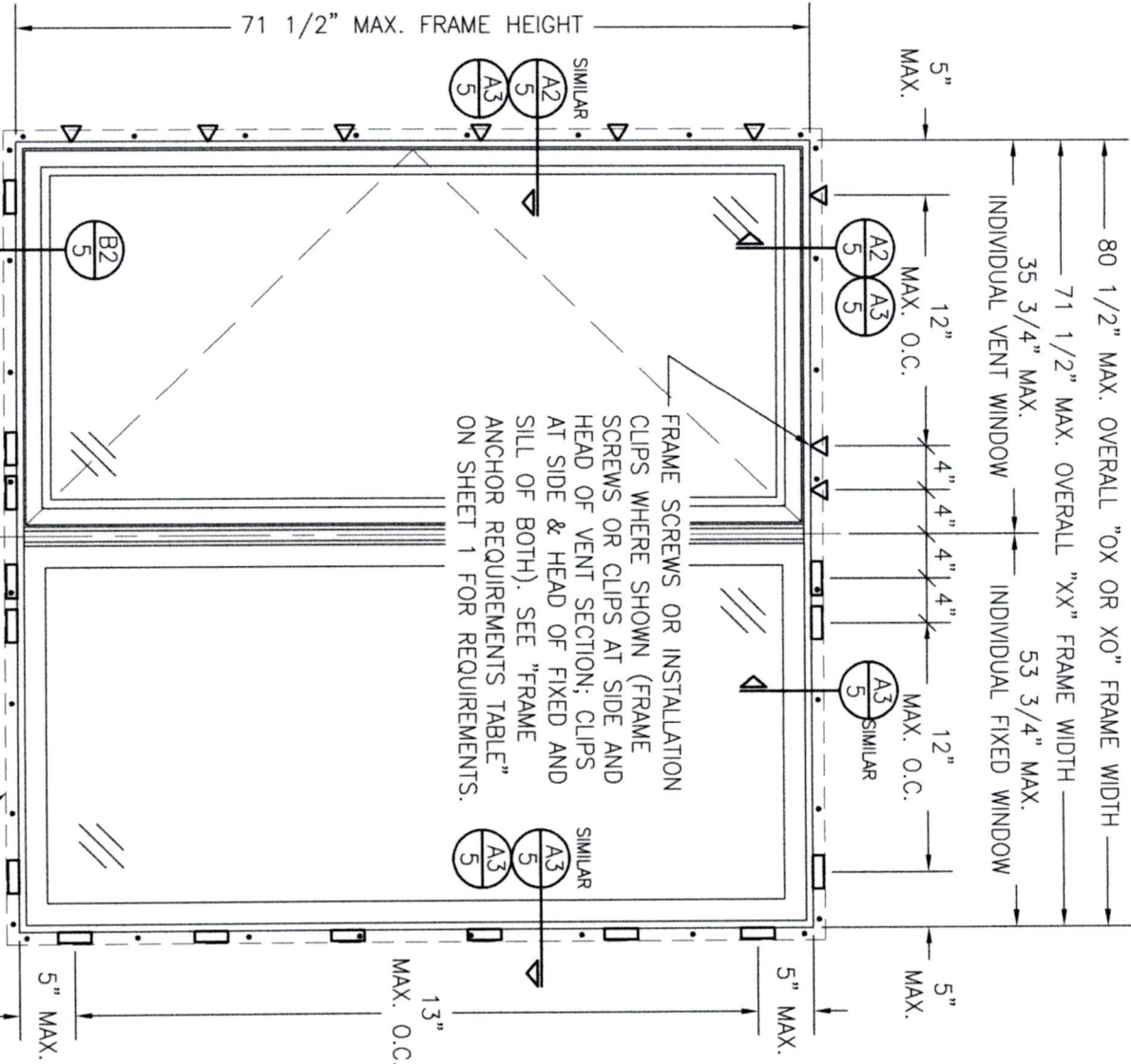


EXTERIOR ELEVATION:

2-WIDE WINDOW

SCALE: 3/4" = 1'-0"

(NAIL FIN MOUNT CONDITION)



EXTERIOR ELEVATION:

2-WIDE WINDOW

SCALE: 3/4" = 1'-0"

(FRAME SCREW & CLIP MOUNT CONDITION)

- 2-WIDE UNIT NOTES:
1. XO CONFIGURATION IS SHOWN, OX & XX ALSO APPLY.
 2. THE WINDOWS WITHIN EACH UNIT MAY BE OF OF EQUAL OR UNEQUAL WIDTH.

ALLOWABLE DESIGN PRESSURE
(2-WIDE WINDOW UNITS)

WINDOW CONFIGURATION	ALLOWABLE PRESSURE
XX	+/-50 PSF
XO & OX	+/-35 PSF

PRESSURE SHOWN IN THIS TABLE IS FOR INSTALLATION CONDITIONS ONLY. THE GOVERNING DESIGN PRESSURE ON THE WINDOWS SHALL BE THE LESSER OF THAT SHOWN IN THE INDIVIDUAL WINDOW'S STATE APPROVAL OR THAT SHOWN IN THIS TABLE.

NO.	REVISION	DESCRIPTION	BY	DATE



CUSTOM WINDOW SYSTEMS, INC.
1900 SW 44TH AVENUE
OCALA, FL 34474
352-368-6922

DRAWING TITLE

COMFORT SHIELD VINYL NON-IMPACT CASEMENT WINDOWS

CONSULTANTS

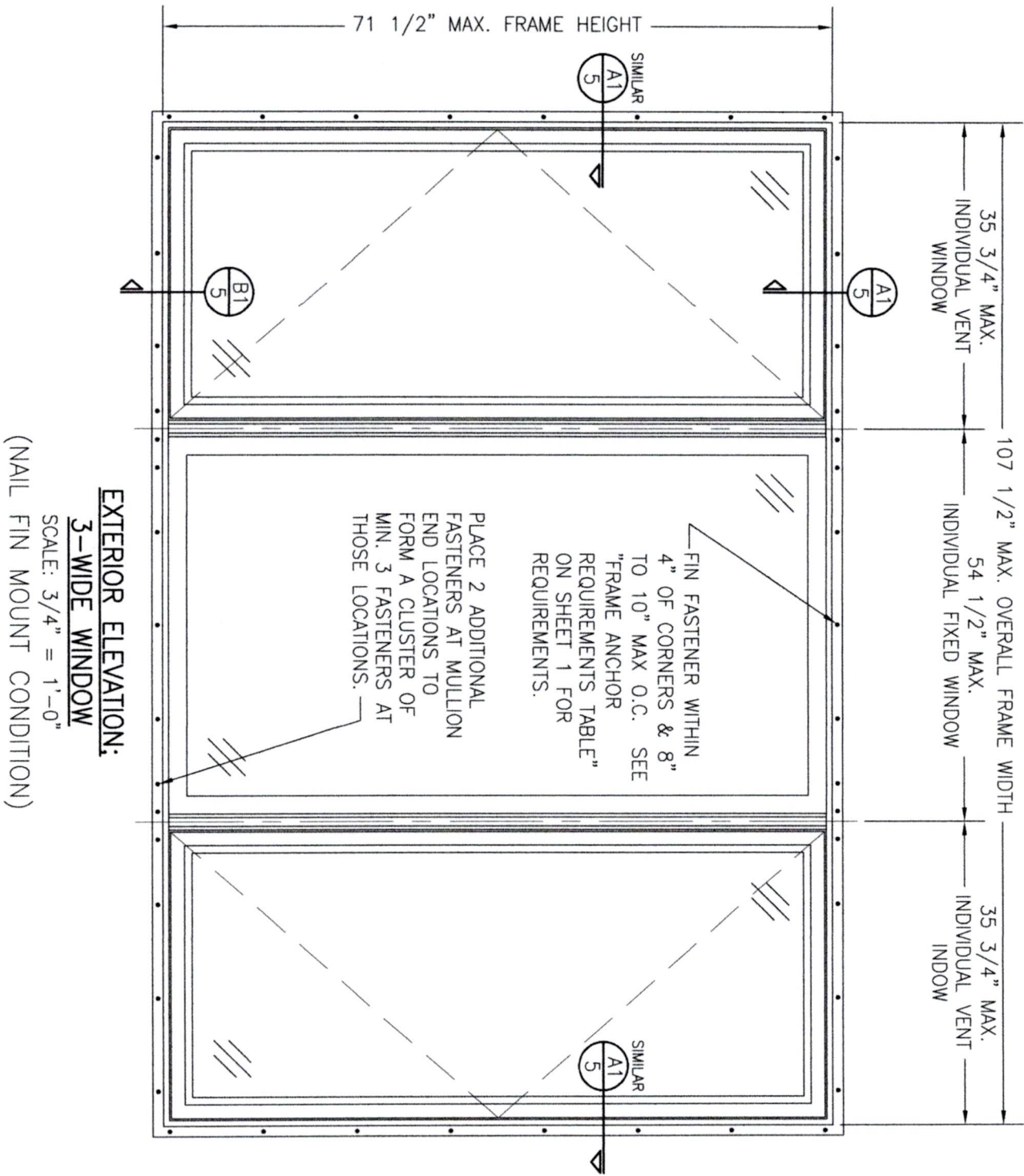
W. W. SCHAEFER ENGINEERING
& CONSULTING, P.A.
26376 NADIR ROAD; UNIT 309
PUNTA GORDA, FL 33983
PHONE: 561-744-3424

CERTIFICATION

WARREN W. SCHAEFER, P.E.
P.E. NO. 44135

DRAWING NO. 2020

SHEET NO. 2 OF 6



- 3-WIDE UNIT NOTES:
1. XOX CONFIGURATION IS SHOWN, ANY COMBINATION OF VENT AND FIXED ALSO APPLIES.
 2. THE WINDOWS WITHIN MAY BE EQUAL OR UNEQUAL WIDTH.
 3. NO SINGLE WINDOW WIDTH NOR THE OVERALL FRAME WIDTH MAY EXCEED THE DIMENSIONS SHOWN.

ALLOWABLE DESIGN PRESSURE
(3-WIDE WINDOW UNITS)

+/-35 PSF

EXTERIOR ELEVATION:
3-WIDE WINDOW
SCALE: 3/4" = 1'-0"
(NAIL FIN MOUNT CONDITION)

COMFORT SHIELD VINYL NON-IMPACT CASEMENT WINDOWS

CONSULTANTS
W. W. SCHAEFER ENGINEERING
& CONSULTING, P.A.
26376 NADIR ROAD; UNIT 309
PUNTA GORDA, FL 33983
PHONE: 561-744-3424

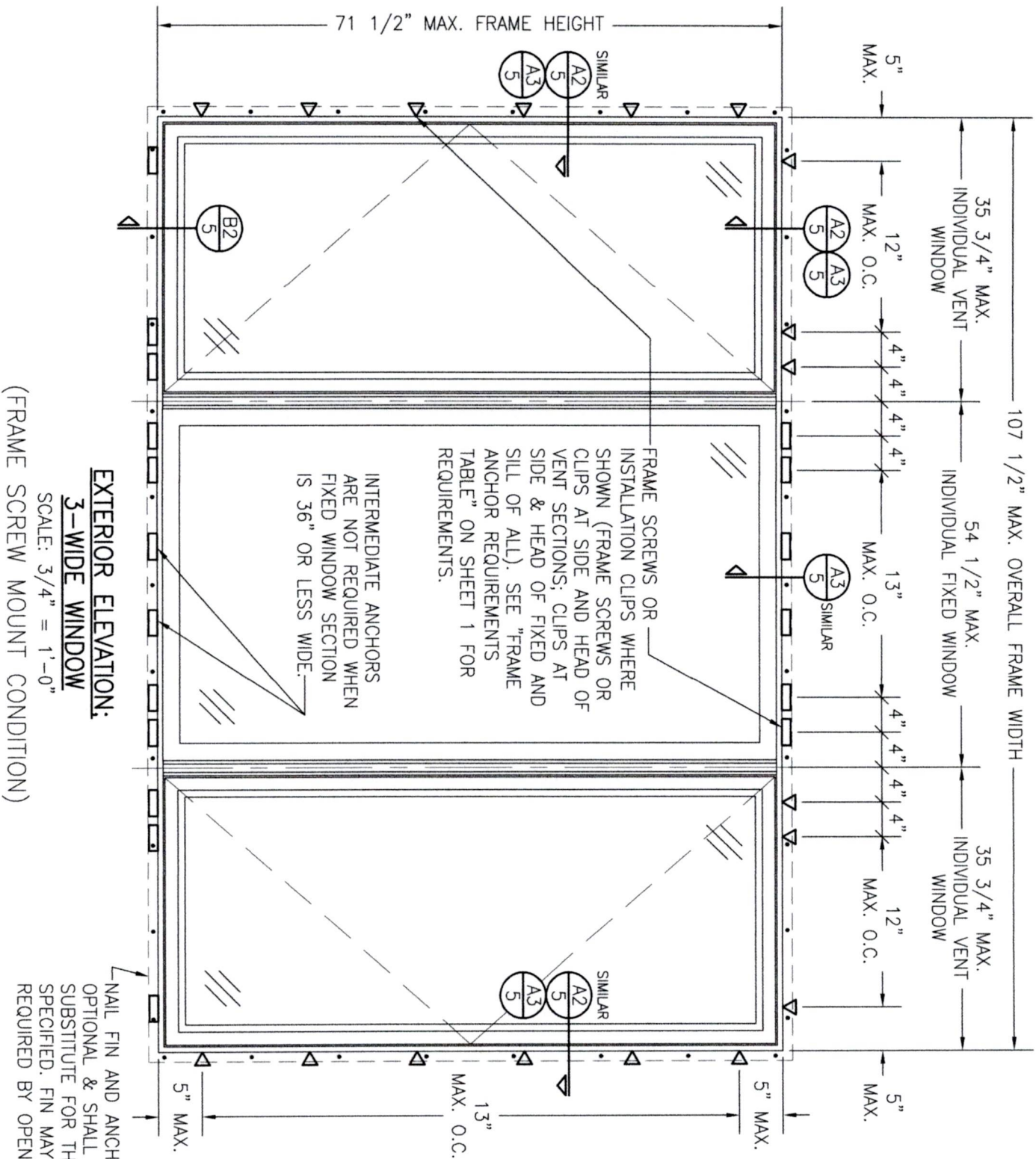
MANUFACTURER
CUSTOM WINDOW SYSTEMS, INC.
1900 SW 44TH AVENUE
OCALA, FL 34474
352-368-6922

CERTIFICATION
WARREN W. SCHAEFER, P.E.
P.E. NO. 44135

NO.	REVISION	DESCRIPTION	BY	DATE

DRAWN BY:	CHECKED BY:
W.W.S.	W.W.S.
DATE:	DATE:
1=16	04/10/23

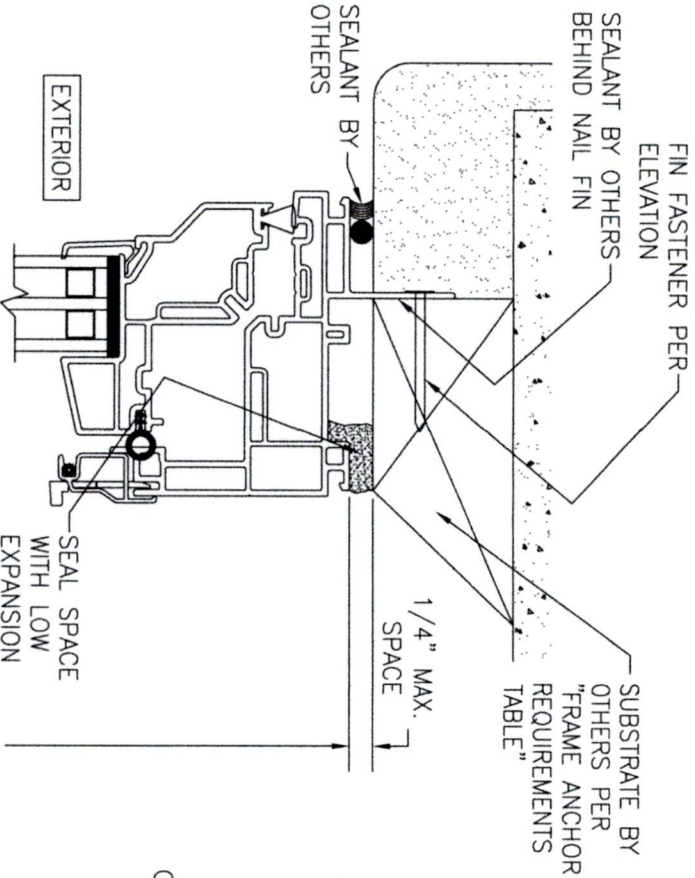
DRAWING NO. 2020
SHEET NO. 3 OF 6



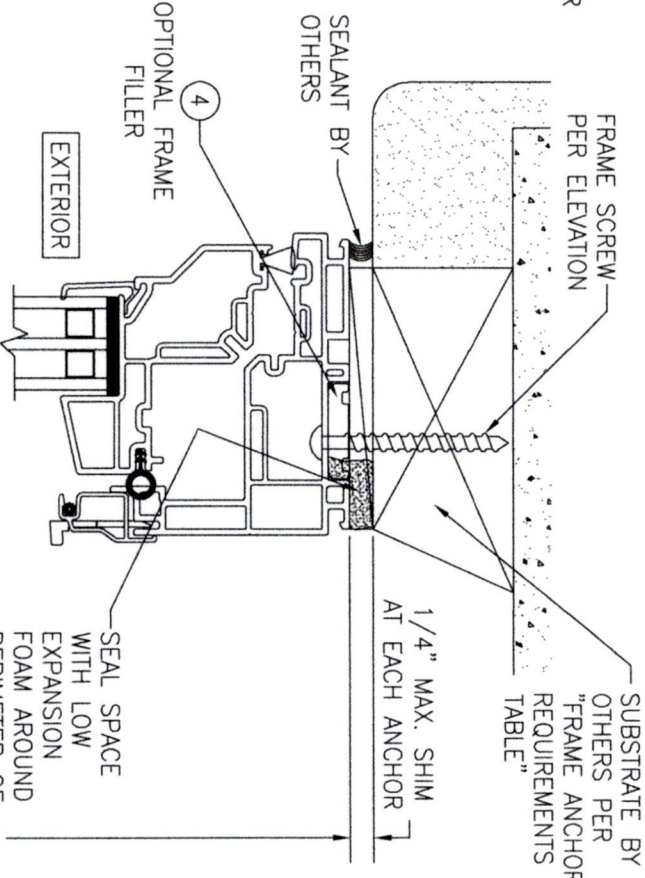
EXTERIOR ELEVATION:
3-WIDE WINDOW
SCALE: 3/4" = 1'-0"
(FRAME SCREW MOUNT CONDITION)

- 3-WIDE UNIT NOTES:**
1. XOX CONFIGURATION IS SHOWN, ANY COMBINATION OF VENT AND FIXED ALSO APPLIES.
 2. THE WINDOWS WITHIN MAY BE EQUAL OR UNEQUAL WIDTH.
 3. NO SINGLE WINDOW WIDTH NOR THE OVERALL FRAME WIDTH MAY EXCEED THE DIMENSIONS SHOWN.

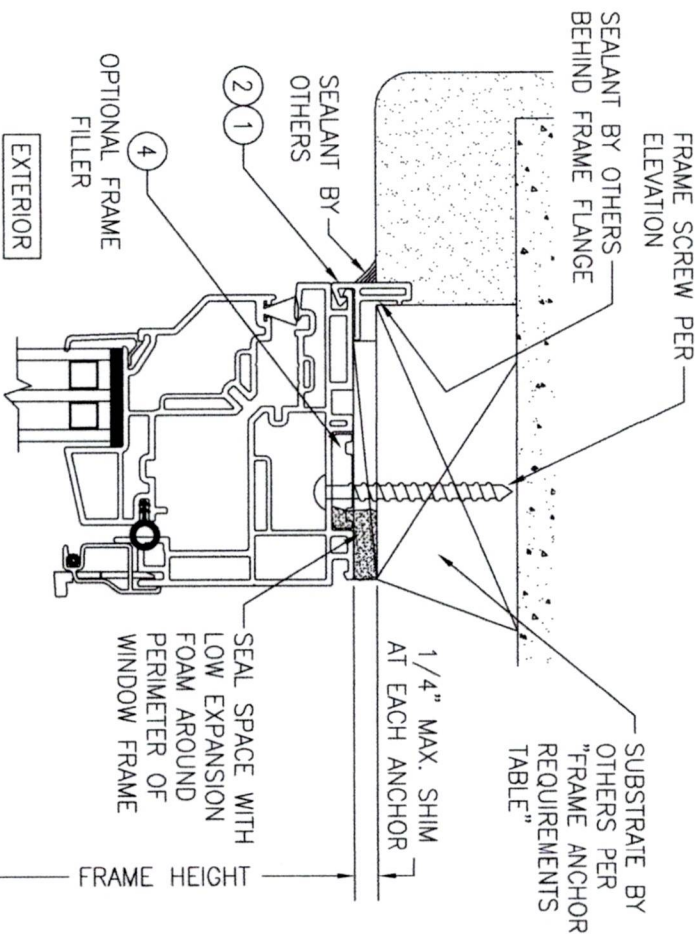
ALLOWABLE DESIGN PRESSURE
(3-WIDE WINDOW UNITS)
+ / - 35 PSF



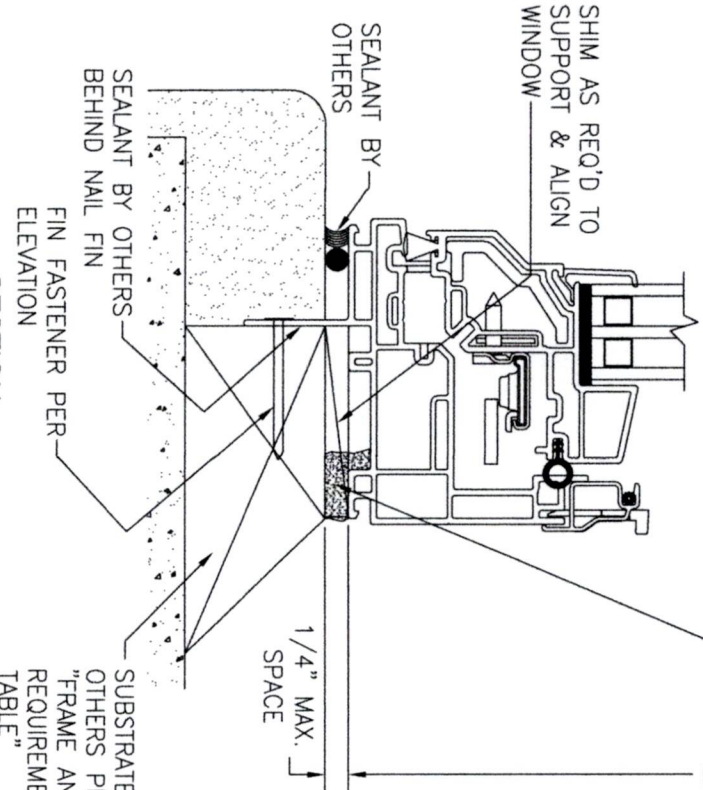
SECTION
A1
SCALE: 3/4 FULL
(NAIL FIN MOUNT)



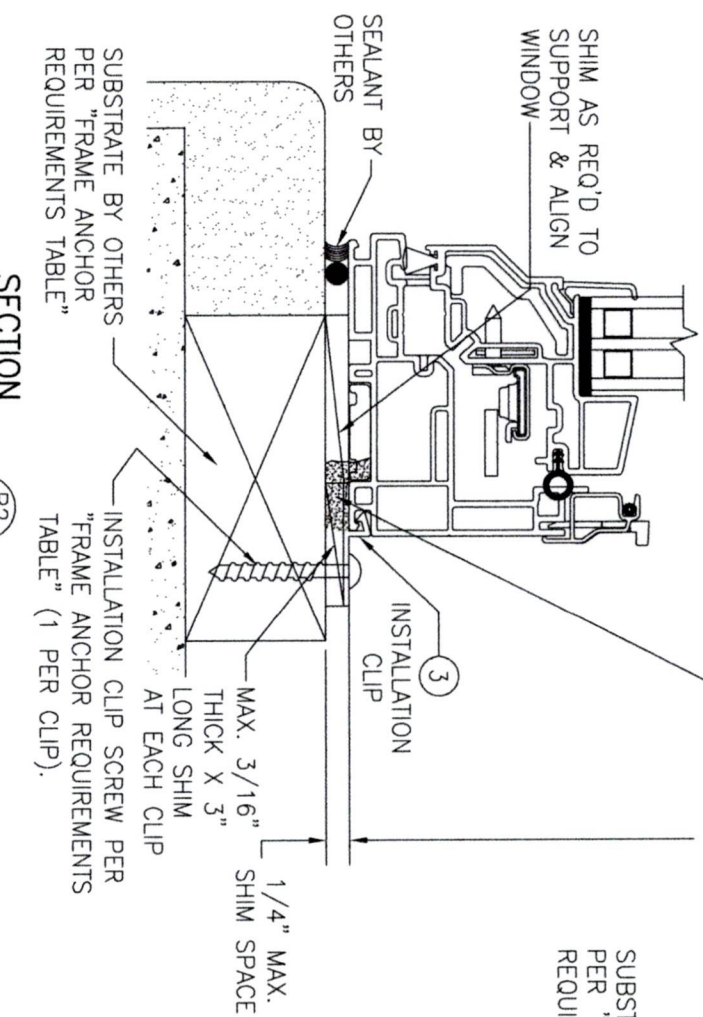
SECTION
A2
SCALE: 3/4 FULL
(FRAME SCREW MOUNT)



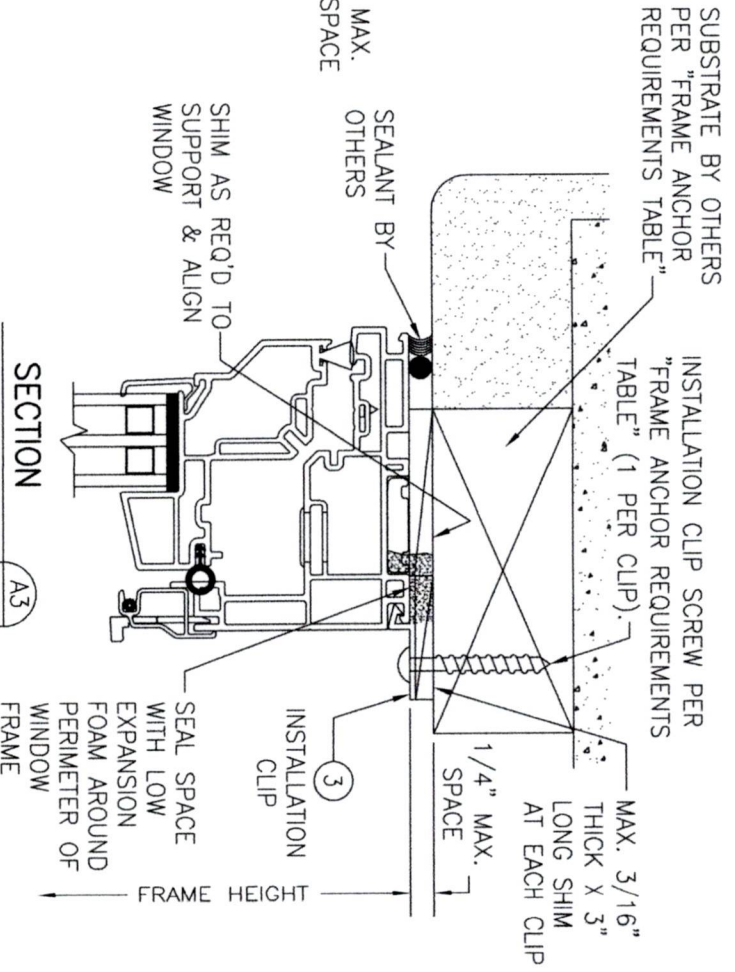
ALTERNATE SECTION
A2
SCALE: 1/2 FULL
(FRAME SCREW MOUNT WITH FLANGE)



SECTION
B1
SCALE: 3/4 FULL
(NAIL FIN MOUNT)



SECTION
B2
SCALE: 3/4 FULL
(CLIP MOUNT)



SECTION
A3
SCALE: 3/4 FULL
(CLIP MOUNT)

NO.	REVISION	DESCRIPTION	BY	DATE

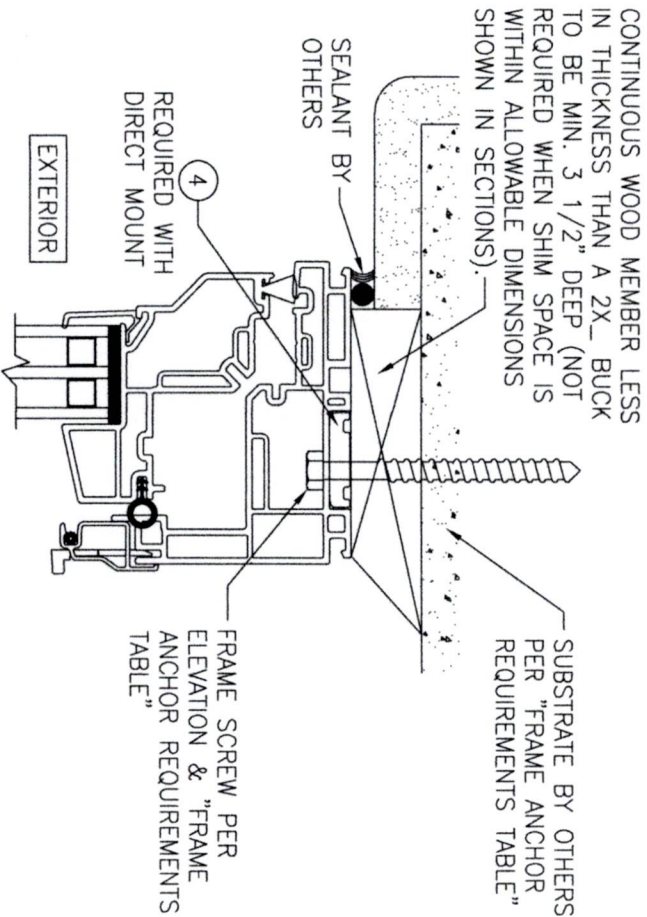
CUSTOM WINDOW SYSTEMS, INC.
1900 SW 44TH AVENUE
OCALA, FL 34474
352-368-6922

W. W. SCHAEFER ENGINEERING & CONSULTING, P.A.
26376 NADIR ROAD; UNIT 309
PUNTA GORDA, FL 33983
PHONE: 561-744-3424

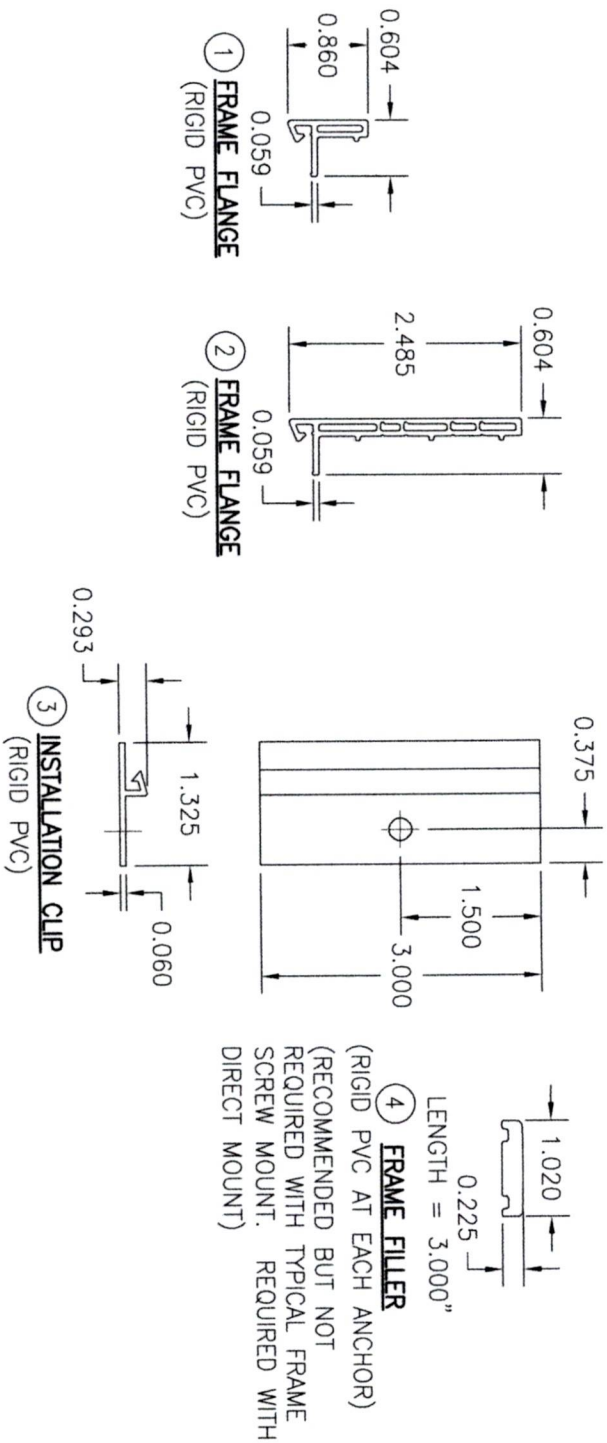
WARREN W. SCHAEFER, P.E.
P.E. NO. 44135

CERTIFICATION

DRAWING NO. 2020
SHEET NO. 5 OF 6



**OPTIONAL DIRECT MOUNT DETAIL
TO SUBSTRATE WITH SPACER**
(HEAD SECTION SHOWN; SIDES & SILL ARE INSTALLED THE SAME)
(FOR DETAIL NOT SHOWN, SEE OTHER SECTIONS)



NO.	REVISION	DESCRIPTION	BY	DATE	PLOT: 1=16	DRAWN BY: W.M.S.	CHECKED BY: W.M.S.

MANUFACTURER
 **CUSTOM WINDOW SYSTEMS, INC.**
1900 SW 44TH AVENUE
OCALA, FL 34474
352-368-6922

CONSULTANTS
**W. W. SCHAEFER ENGINEERING
& CONSULTING, P.A.**
26376 NADIR ROAD; UNIT 309
PUNTA GORDA, FL 33983
PHONE: 561-744-3424

CERTIFICATION

WARREN W. SCHAEFER, P.E.
P.E. NO. 44135

DRAWING NO.:
2020
REV.
SHEET NO.
6
OF
6